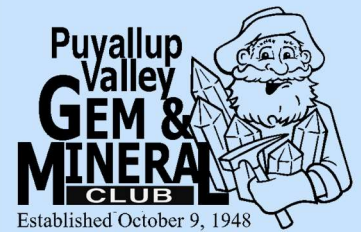


ROCK-A-TEER



Newsletter of the Puyallup Valley Gem & Mineral Club

Jillian Higgins

Issue 39

Volume 92

April

2021

THIS ISSUE

President's Perspective P.2
Field Trip Report P.2
Club House Schedule P.3
Nominating Committee Report P.4
Gem Faire Recap & Club Show Report P.5
Association's Director Report P.6
Sunshine Report P.6
Grape Agate P.7-8
Community Supporters P.9
From the Bench P.10
2021 Show and Tell P.11
2021 Officers and Chairs P.12
Word Search P.13
Happy Birthdays P.13

President's Perspective

Tony Johnson

I am so glad that things are starting up again and we are able to have meetings. It was really nice to see many of you Friday.

We had a really great program night with Carl Carlson. It was really nice of him to explain how Ellensburg Blue was formed.

We will need volunteers for the Puyallup Faire so keep your eyes open for the sign up sheets being passed around the meetings.

The club is now communicating mostly by email, given that we are not able to hold meetings. If you have not already, please checked your email for information, and update the membership director if you have had a change or added a new email address.

Field Trip Report

April 17 - Saddle Mountain

Meeting place - 10:00AM at the Shell Station at 723 Government Way, Mattawa, WA

Hunting for - Petrified Wood

Tools you need - Shovel and Rockhammer and a backpack/bucket for your treasures

Access - this area is fairly easy to access, walking down 300 feet on a slight incline (more important for when you come back up)

Additional items - lunch/snacks and water, water, water. Dress in layers. After done, if there is interest we can go to the diomaceous earth and common opal sight

May 15 – To Be Announced

Meeting place –

Hunting for –

Tools you need –

Access –

Additional items - lunch/snacks and water, water, water. Dress in layers.

Please remember that even though we love to meet new people, fieldtrips are a member benefit and part of your membership dues covers you for injury liability.

Though injuries are rare, and we do everything we can to avoid them, we are going out into nature, and uncontrollable environment.

All individuals attending field trips will have to sign a release of liability, and if you are bringing guests, we will try to entice them into join the club by having Membership applications available.

APRIL 2021 CLUB HOUSE SCHEDULE

DATE	DAY	TIME	ACTIVITY	LOCATION	INSTRUCTOR
1	Thursday	4:00PM-8:00PM	Members Workshop	Club House	Tony Johnson
2	Friday				
3	Saturday	10:00AM-2:00PM	Members Workshop	Club House	Glen Ripper
4	Sunday				
5	Monday	10:00AM-2:00PM	Members Workshop	Club House	Bill Clark
6	Tuesday	4:00PM-8:00PM	Members Workshop	Club House	Jim Christian
		7:00PM	Club Board Meeting	Club House	Jim Christian
7	Wednesday	10:00AM-2:00PM	Members Workshop	Club House	Glen Ripper
		4:00PM-8:00PM	Wire Wrapping	Club House	Tony Johnson
8	Thursday	4:00PM-8:00PM	Members Workshop	Club House	Tony Johnson
9	Friday	7:30PM	Club Business Meeting	Fruitland Grange	Tony Johnson
10	Saturday	10:00AM-2:00PM	Fire Agate Carving	Club House	Craig Oda
11	Sunday				
12	Monday	10:00AM-2:00PM	Members Workshop	Club House	Glen Ripper
		7:00PM-8:00PM	Opal Club Business Meeting	Club House	Tony Johnson
13	Tuesday	4:00PM-8:00PM	Members Workshop	Club House	Jim Christian
14	Wednesday	10:00AM-2:00PM	Members Workshop	Club House	Glen Ripper
		4:00PM-8:00PM	Opal Cutting	Club House	Tony Johnson
15	Thursday	4:00PM-8:00PM	Members Workshop	Club House	Tony Johnson
16	Friday				
17	Saturday	10:00AM-2:00PM	Saddle Mountain	Field Trip	Tony Johnson
		10:00AM-2:00PM	Silversmithing WORK SHOP	Club House	Dave sanderson
18	Sunday				
19	Monday	10:00AM-2:00PM	Members Workshop	Club House	Bill Clark
20	Tuesday	4:00PM-8:00PM	Members Workshop	Club House	Jim Christian
21	Wednesday	10:00AM-2:00PM	Members Workshop	Club House	Glen Ripper
		4:00PM-8:00PM	Wire Wrapping	Club House	Tony Johnson
22	Thursday	4:00PM-8:00PM	Members Workshop	Club House	Tony Johnson
23	Friday	6:00PM	Club Auction/Potluck	Fruitland Grange	Tony Johnson
24	Saturday	10:00AM-2:00PM	Intarsia / Stabilizing	Club House	Tony Johnson
25	Sunday				
26	Monday	10:00AM-2:00PM	Members Workshop	Club House	Glen Ripper
27	Tuesday	4:00PM-8:00PM	Members Workshop	Club House	Jim Christian
28	Wednesday	10:00AM-2:00PM	Members Workshop	Club House	Glen Ripper
		4:00PM-8:00PM	Opal Cutting	Club House	Tony Johnson
29	Thursday	4:00PM-8:00PM	Members Workshop	Club House	Tony Johnson
30	Friday				

For questions about a specific class or event, contact the instructor

Jim Christian (253) 720-9502

Jillmar Higgins (253) 555-2116

Dennis Batchelor (360) 870-8741

Tony Johnson (253) 863-9238

Glen Ripper (253) 508-7545

This Schedule is Subject to Change. Please check the website for updates.

As of the publication of this schedule Pierce County has moved to Phase III and is open without limitation on the number of individuals who can attend, but we are still using the scheduling system and open with limited conditions.

2021 Nominations and Elections

Due to Covid-19 restrictions we were unable to have our regular meetings which kept us from having our yearly elections. Now that we can hold meetings again it is time to elect a new board of directors. The plan is to go through the nomination process in April, have the election in May and seat a new board in June. If you have ever wanted to be on the board this is your golden opportunity. This year's board will serve out the rest of the year with new elections and seating of the board on our regular schedule. Here is the list of the positions and people currently running:

- President: Tony Johnson
- Vice-President: Jim Christian
- Secretary: Teresa Rodrick
- Treasure: Jillian Higgins
- Associations Director: **Open Position**
- 2 Year Director: Glen Ripper
- 1 Year Director: Patti Dailey-Shives
- 2 Year Trustee: Glenn Rodrick
- 1 Year Trustee: Dennis Batchelor

If you have a desire to run for any of the above positions, please reach out to me. If you would like more information on the responsibilities of any of the above positions, please review the club by-laws or standard operating procedures posted on the website. My email is rocksnreptiles4me@gmail.com or I can be reached by telephone or text at 253-310-5891. If you do call please leave a message and I will return your call.

Mark Baumann

Club House Rules

When the clubhouse reopens it will be on a trial basis with specific requirements and conditions which are subject to change and because this is a trial, the clubhouse may again close until future notice.

Requirements and conditions:

- Members must already be qualified to use clubhouse equipment.
- Reservations must be made by using the reservation process.
- Each member must follow the usual sign in and payment process AND sign a Release of Liability and Hold Harmless Agreement EACH TIME the member comes to a workshop or class.
- Face coverings and social distancing are required.

Other than making reservations, all comments, concerns, etc. are to be directed to Tony Johnson, phone (253) 863-9238 or email at ynotopals@outlook.net

2021 CLUB SHOW UPDATES

March 2021 Gem Faire.

Despite the current Covid “guidelines” this turned out to be a very successful event. In addition to the usual static displays, examples of things club members make at the clubhouse, and geode cracking, we added the kids “spin for a free rock” wheel. Our team of dedicated club members did a superb job in representing the PVG&MC resulting in the addition of 9 new members. Our demonstrators were busy showing their talents and answering many, many, questions. Looking ahead, the next Gem Faire show is scheduled for November 5th, 6th, and 7th where we are negotiating for a larger space so we can expand our demonstrations to include trim saw use, cabbing, and possibly more. If you are interested in participating in the November show, contact Jim Christian, 253-720-9502 or jimchristian_205@hotmail.com.



But wait, there's more ---

Our 18th annual Valley of Gems show is scheduled for June 4th, 5th, and 6th, at Swiss Park in Bonney Lake. If you are interested in volunteering, we need folks to help set up, break down, and represent the club in several areas, please contact Jim Christian.

Our 2nd annual Gem Show in the trees is scheduled for August 13th, 14th, & 15th, at the Tacoma Sportsmen's Club in Puyallup. Volunteers are also needed for this show (not as many as the Swiss show) so if you are interested in helping with this show, Jim Christian is also the contact.

ASSOCIATIONS DIRECTOR'S REPORT FOR APRIL 2021

WA STATE MINERAL COUNCIL (WSMC): <https://mineralcouncil.wordpress.com/>

This is the link to the website which contains the latest/February Newsletter. No notices requiring heightened awareness or responsive action(s) to be taken by Puyallup Valley Gem & Mineral Club at this time.

WSMC0221.pdf

AMERICAN LAND ACCESS ASSOCIATION (ALAA):

<http://amlands.org/>

This is the link to the website which contains the latest (2020) 4th Quarter Newsletter. No notices requiring heightened awareness or responsive action(s) to be taken by Puyallup Valley Gem & Mineral Club at this time.

2021 Fee Free Days - National Parks and Monuments

The six entrance fee-free days for 2021 will be:

- **January 18:** [Birthday of Martin Luther King, Jr.](#)
- **August 4:** One year anniversary of the [Great American Outdoors Act](#)
- **April 17:** First day of [National Park Week](#)
- **August 25:** [National Park Service Birthday](#)
- **September 25:** [National Public Lands Day](#)
- **November 11:** [Veterans Day](#)

Additional Info

- [National Park Service](#)
- [U.S. Forest Service](#)

-Bill Clark, PVGMC Associations Director 2020+

SUNSHINE REPORT

With everything going on, we have not had a chance to meet as a group and bring to each other's attention members who need healing thoughts or prayer sent their way.

Uvah Robak, past president and member of PVG&MC, passed away on March 17, 2021 due to complications of pneumonia. Services will be held in June in Arizona with more information to come.

If you know of anyone else who needs to be recognized in next months
Sunshine Report , please email or call either

Tony Johnson at ynotopals@outlook.com (253) 863-9238 or

Jillian Higgins at J.Y.Higgins@gmail.com (253) 355-3146

Grape Agate

Tiny spheres of purple quartz with a botryoidal habit.

Article by: [Hobart M. King](#), PhD, RPG



Large Cluster of Grape Agate: A large cluster of grape agate that is representative for the material. Photo copyright iStockphoto / jonnysek.

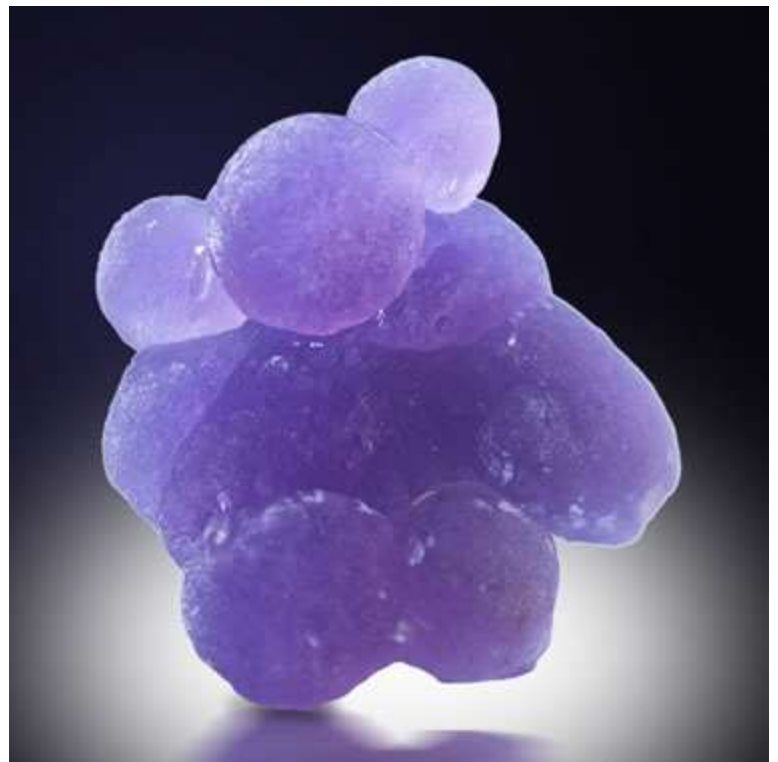
Small Cluster of Grape Agate: A tiny cluster of grape agate with superb color and a fun shape. Photo copyright iStockphoto / halock.

What Is Grape Agate?

Grape agate is a marketing name for purple aggregates of tiny [quartz](#) crystals with a spherical (botryoidal) [habit](#). The name reflects their purple color and how they occur in clusters that resemble bunches of grapes. This material is found in the Mamuju area, near the western coast of Sulawesi, an island of [Indonesia](#).

Grape agate entered the mineral market in 2016. Its popularity quickly spread through mineral shows, [rock shops](#), websites, and online marketplaces. Specimens with a fun appearance and an interesting name like grape agate market themselves.

The "grapes" of these specimens are tiny. They range between about two and eight millimeters across. Although purple is the best color to match



the "grape" name, some specimens have grapes that are white, gray, green, or blue.



Grape Agate: A tiny cluster of grape agate with superb color and a fun shape. Note that the surface is not smooth. Under a magnifier it would be drusy. Photo copyright iStockphoto / halock.

Not So Grape: A cluster of botryoidal quartz of various colors. Not everything with the grape "habit" is purple in color. Much is green, gray, yellow or blue. Photo copyright iStockphoto / jonnysek.

Grape, Yes. Agate, Maybe Not.

The name "grape agate" has stuck as a marketing term. However, the name is a misnomer. Misnomers are names that are scientifically

incorrect. There are no arguments with "grape" because of its purple color. But, the use of "agate" as a species/variety name draws objections. Here is an analysis...

Grape Agate: This name is inappropriate because [agate](#) should have parallel internal banding. The name agate also implies quartz with a microcrystalline texture; however, most of the grapes have a drusy surface - making them megascopically crystalline.

Grape Chalcedony: Like agate, the name chalcedony implies quartz with a microcrystalline texture.

Grape Quartz: The name quartz fits better than both agate and chalcedony. But, the appropriate name for purple quartz is [amethyst](#).

Botryoidal Amethyst: The name "amethyst" better honors mineralogical and gemological definitions, and the adjective "botryoidal" communicates a rounded shape.



So, this author concludes that the name "botryoidal amethyst" is a name that is scientifically correct, but is not as much fun as "grape agate".

Field Trip Recap

Dennis Batchelor

There were 19 intrepid souls on the trip to Damon point. A few red carnelians were found, but there were a lot of agates. The weather was fantastic, sunny, and only a little windy, and everyone seemed to enjoy the beach.

COMMUNITY SUPPORTERS



South Hill RV Sales

Offering the highest rated starter, midline, and high end towables and RV's at the lowest prices which has made us a top volume dealer in Washington state.

12414 Meridian East, Puyallup 98373
253-435-7751 or 866-435-7751
www.southhillrv.com



Rice Museum of Rocks & Minerals

To engage, inspire, and educate generations on the splendor and complexity of our Earth.

26385 NW Groveland Dr., Hillsboro, OR 97124
503-647-2418
Info@ricenorthwestmuseum.org
www.ricenorthwestmuseum.org

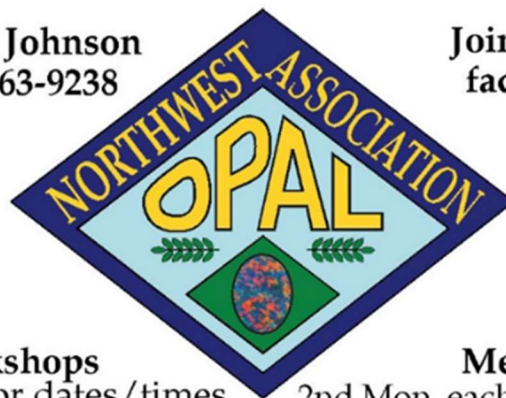
H & I Lapidary

Amber, Jewelry, Beads, Findings, Gemstones, Slabs, Rough Material, Fossils, and Aussie items.

Mike and LaVon Siperek
(253) 531-7294
4203 E 99th Street, Tacoma, WA 98446
Yankees_Diesel@comcast.net

Tony Johnson
253-863-9238

**Join us on
facebook**



Workshops
call for dates/times

Meetings
2nd Mon. each month

FROM THE BENCH

Jeweler's Saw Blade, or Spiral Saw Blade...How do you choose the right blade for the job?

A Jeweler's Saw is probably the first and most important tool on the Silversmithing Bench. It gets used often and for many, many purposes other than just cutting out shapes. So how do you choose the right blade for the job you are doing? I wish there was a simple and straightforward answer, but there is not. Mostly it comes down to personal preference, but until you have tried multiple brands, sizes, and the two different types, I will try my best to help point beginners towards a starting off point.

Easiest place to start are the two types: straight blade or spiral. To the best of my knowledge, the only time a spiral blade is recommended for use is if you are cutting wax. Because of the spiraling shape of the blade, the wax doesn't seem to gum up between the teeth of the blade as easily. In a pinch, **if you have no other alternative**, you can use a spiral blade on metal, but you will be cutting out a much larger track of material than with a standard straight saw blade, so if you are piercing small designs, you would be better off putting the project aside and purchasing new straight blades.

Both types of blades come in what I call a "multi-pack" where there will be a small quantity of different sized blades. This is really ideal when you are just starting out because it gives you options to try in different settings until you find your presence and can order that specific size in a larger quantity. As far as cost between different brands and sizes, it is fairly negligible, so don't limit yourself to one Brand and size. Again, it comes down to personal preference. You may find you have better control with a specific brand, or that you break blades less often with another. Depending on what matters most to you, keep trying new blades until you find the one that works best for your style of sawing.

When it comes to size, it really does matter what you are doing. Bigger is not always better.

If you are cutting a lot of straight lines, use a bigger blade so you can cut through the materials faster. If you are cutting a lot of curves, smaller blades help you have more control to stay on the path you designated. There are many different Saw Blade specification charts to help you determine what blade size works best for the gauge of metal you are using, and the size of the piercing you are doing. Become familiar with the chart and save yourself time!

2021 SHOW & TELL THEMES and PROGRAM NIGHT EVENTS

MEETING	DATE	SHOW & TELL THEME	PROGRAM NIGHT EVENT
January - 1st Meeting	January 8, 2021	Tiger's Eye or any field trip finds	
January - 2nd Meeting	January 22, 2021	Lace or any field trip finds	To Be Announced
February - 1st Meeting	February 12, 2021	Heart shaped or any field trip finds	
February - 2nd Meeting	February 26, 2021	Red, Pink, & Purple or any field trip finds	To Be Announced
March - 1st Meeting	March 12, 2021	"Sham" rocks or any field trip finds	
March - 2nd Meeting	March 26, 2021	Green or any field trip finds	To Be Announced
April - 1st Meeting	April 9, 2021	April Fools Gold or any field trip finds	
April - 2nd Meeting	April 23, 2021	No Show & Tell	Auction/Potluck
May - 1st Meeting	May 14, 2021	Flower rocks or any field trip finds	
May - 2nd Meeting	May 28, 2021	No Show & Tell	To Be Announced
June - 1st Meeting	June 11, 2021	Fancy Slabs & Fossils + any field trip finds	
June - 2nd Meeting	June 25, 2021	No Show & Tell	Tailgate Party @ Grange Parking Lot
July - 1st Meeting	July 9, 2021	Red, White, & Blue or any field trip finds	
July - 2nd Meeting	July 23, 2021	No Show & Tell	To Be Announced
August - 1st Meeting	August 13, 2021	Carnelians + any field trip finds	
August - 2nd Meeting	Saturday August 28, 2021	No Show & Tell	Picnic & Tailgate Party at club house on Saturday
September - 1st Meeting	September 10, 2021	Crystals + any field trip finds	
September - 2nd Meeting	September 24, 2021	No Show & Tell	Mini Lapidary Demonstrations
October - 1st Meeting	October 8, 2021	Wood + any field trip finds	
October - 2nd Meeting	October 22, 2021	No Show & Tell	Auction/Potluck
November - 1st Meeting	November 12, 2021	Thundereggs & Geodes + any field trip finds	
November - 2nd Meeting	November 26, 2021	No Show & Tell	BINGO Night
December - 1st Meeting	Saturday December 11, 2021	No Show & Tell	Holiday Banquet/Officer Installation on Saturday
December - 2nd Meeting	No Meeting	No Show & Tell	

2021 Elected Officers - Carry Over Until Election

Title	Name	Phone	Email
President:	Tony Johnson	(253)863-9238	ynotopals@outlook.net
Vice President:	Jim Christian	(253)720-9502	Jimchristian_205@hotmail.com
Secretary:	Teresa Rodrick	(253)531-4062	gtrodi@comcast.net
Treasurer:	Jillian Higgins	(253)355-3146	J.Y.Higgins@gmail.com
Association Director:	Bill Clark	(360)893-6919	clarkwa@comcast.net
1 Year Director:	Glen Ripper	(253)508-7545	glen311944@yahoo.com
2 Year Director:	Patti Dailey-Shives	(253)678-0029	pattidailey28@gmail.com
1 Year Trustee:	Glenn Rodrick	(253)531-4062	gtrodi@comcast.net
2 Year Trustee:	Dennis Batchelor	(360)870-8741	hobbyhorse51@gmail.com

2021 Committee Chairs

Title	Name	Phone	Email
Club house Coordinator	Tony Johnson	(253)863-9238	ynotopals@outlook.net
Club Show Coordinator	Jim Christian	(253)720-9502	Jimchristian_205@hotmail.com
Field Trips Coordinator	Dennis Batchelor	(360)870-8741	hobbyhorse51@gmail.com
Web Master	Jillian Higgins	(253)355-3146	J.Y.Higgins@gmail.com
Editor/Communications	Jillian Higgins	(253)355-3146	J.Y.Higgins@gmail.com
Membership	Jillian Higgins	(253)355-3146	J.Y.Higgins@gmail.com
Sunshine	Tony Johnson	(253)863-9238	ynotopals@outlook.net
Newsletter	Jillian Higgins	(253)355-3146	J.Y.Higgins@gmail.com
Mineral Council	Tony Johnson	(253)863-9238	ynotopals@outlook.net
Historian	Nicole Payne	(253)208-9802	pudnikki@yahoo.com



WASHINGTON STATE MINERAL COUNCIL

The Puyallup Valley Gem & Mineral Club is a member of the American Lands Access Association and the Washington State Mineral Council. You can find more information about the ALAA at: amlands.org or the WA Mineral Council at: mineralcouncil@zoho.com

HAPPY BIRTHDAY

April 2021

Lorelei McLean
– 4th

Damon Hansen
– 7th

Hateya Hunter
– 7th

Joshua McVey
– 7th

Jim Christian
– 9th

Jan Nicholls
– 18th

Matthew McVey
– 23rd

Larry Hoffman
– 25th

Nichole Payne
– 26th

Brandon Stickney
– 28th

Tony Johnson
– 30th

WHAT'S IN A MINE II

H E A D F R A M E L B A I R F G G
Y O C H O C K D R A G L I N E R A
D U I N B Y E I T A M V R O A I L
R T A S E P O L S T O R O N N Z L
A C E X T R A C T I O N I P T Z E
U R C H E H A R D T R T L T I L R
L O R N T I A D I E E M I R C Y Y
I P E C E N G S M T C L F A L R E
C E V Z S R O I M U N H E C I C D
O A O F R P R O O F B O L T N O O
N M E Y E P V A G I R E G O E N L
V R E D B H G S B N F L O R L T R
E L R A M U L D A X I V T Q A A E
Y C Y F I A L A R E N K M T H C H
O E T F T S S W O R K I N G S T T
R P O E C L A T R O P Y R I T E O
R A L L O C R U S H E R I F S I M

- | | | |
|----------------|----------------|---------------|
| 1. ANTICLINE | 13. GALLERY | 25. PYRITE |
| 2. BARREN | 14. GRANITE | 26. ROOFBOLT |
| 3. CHOCK | 15. GRIZZLY | 27. SHALE |
| 4. COLLAR | 16. HEADFRAME | 28. SINKING |
| 5. CONTACT | 17. HOIST | 29. SLATE |
| 6. CONVEYOR | 18. HYDRAULIC | 30. SLOPE |
| 7. CRUSHER | 19. INBY | 31. TIMBERSET |
| 8. DEPOSIT | 20. MISFIRE | 32. TRACTOR |
| 9. DEPTH | 21. MOTHERLODE | 33. TRANSFER |
| 10. DRAGLINE | 22. OUTCROP | 34. VOID |
| 11. EXTRACTION | 23. PORTAL | 35. WORKINGS |
| 12. FRIABLE | 24. PRIMER | |



ROCK-A-TEER

Newsletter of Puyallup Valley

Gem & Mineral Club

P.O. Box 134

Puyallup, WA 98371