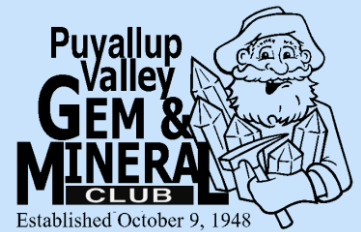


# ROCK-A-TEER



## Newsletter of the Puyallup Valley Gem & Mineral Club

Jillian Higgins

Issue 74

Volume 126

March

2024

### THIS ISSUE

President's Perspective P.2  
Field Trip Report P.2  
March Club House Schedule P.3  
Meet the Member; Mary New P.4  
Association Director Report P.5  
Club house Report & Field Trip Recap.P.5  
How to Make Gem Boxes, Pt. 2, Brett Lawrence. P.6  
Article: Highest Waterfall in the World P.7-10  
Community Supporters P.11  
Sunshine Report P.11  
Mineral of the Month P.12  
From the Bench P.12  
Local Area Shows P.13  
2024 Show and Tell P.14  
2024 Officers and Chairs P.15  
Word Search & Happy Birthdays P.16

P.O. BOX 134, PUYALLUP, WA 98371

PVGAMC@GMAIL.COM

WWW.PUYALLUPVALLEYGEMANDMINERAL.CLUB.COM

(253) 987-6751

## President's Perspective

Tony Johnson

Please return books to the Lending Library. It has come to our attention that some books from our Lending Library at the clubhouse have not been returned in quite a while. These books are donated by fellow members to help others learn skills like Precious Metal Clay and Beading, Cabochon making and where to find material.

You are more than welcome to borrow the books, copy parts you like, but please return them when you are done so others can get a chance to use them as well. If you have borrowed books, please bring them back otherwise we will no longer be able to let individuals leave the clubhouse with our learning materials.

Check out our Clubhouse Report to see about the new scheduling procedure.

# Field Trip Report

## **March 16 – Damon Point**

Meeting place - 10:00AM Damon Point Parking Lot

Hunting for – Beach Agate, Jasper, Pet Wood, Shells

Tools you need - Rock hammer, shovel, rubber boots, and a backpack/bucket for your treasures

Access - this area is fairly easy to access, will be walking on a beach

Additional items - lunch/snacks and water, water, water. Dress in layers

## **April 20 - Saddle Mountain**

Meeting place - 10:00AM at the Shell Station at 723 Government Way, Mattawa, WA

Hunting for - Petrified Wood

Tools you need - Shovel and Rockhammer and a backpack/bucket for your treasures

Access - this area is fairly easy to access, walking down 300 feet on a slight incline (more important for when you come back up)

Additional items - lunch/snacks and water, water, water. Dress in layers. After done, if there is interest, we can go to the diomaceous earth and common opal sight

Please remember that even though we love to meet new people, fieldtrips are a member benefit and part of your membership dues covers you for injury liability.

Though injuries are rare, and we do everything we can to avoid them, we are going out into nature, and uncontrollable environment.

All individuals attending field trips will have to sign a release of liability, and if you are bringing guests, we will try to entice them into join the club by having Membership applications available.

## MARCH 2024 CLUB HOUSE SCHEDULE

DATE	DAY	TIME	ACTIVITY	LOCATION	INSTRUCTOR
1	Friday				
2	Saturday	10:00AM-2:00PM	Members Open Access	Club House	Tony Johnson
3	Sunday				
4	Monday	10:00AM-2:00PM	Members Open Access	Club House	Tasha Parker
5	Tuesday	4:00PM-8:00PM	Members Open Access	Club House	Wes Ames
6	Wednesday	10:00AM-2:00PM	Members Open Access	Club House	Dennis Batchelor
		4:00PM-8:00PM	Members Open Access	Club House	Tony Johnson
7	Thursday	4:00PM-8:00PM	Members Open Access	Club House	Tony Johnson
8	Friday	6:00PM	Club Board Meeting	Fruitland Grange	Nate White
		7:30PM	Club Business Meeting	Fruitland Grange	Tony Johnson
9	Saturday	10:00AM-2:00PM	Fire Agate Carving	Club House	Craig Oda
10	Sunday				
11	Monday	10:00AM-2:00PM	Members Open Access	Club House	Tasha Parker
		7:00PM-8:00PM	Opal Club Business Meeting	Club House	Tony Johnson
12	Tuesday	4:00PM-8:00PM	Members Open Access	Club House	Wes Ames
13	Wednesday	10:00AM-2:00PM	Members Open Access	Club House	Dennis Batchelor
		4:00PM-8:00PM	Wire Wrapping	Club House	Tony Johnson
14	Thursday	4:00PM-8:00PM	Members Open Access	Club House	Tony Johnson
15	Friday				
16	Saturday	10:00AM-2:00PM	Members Open Access	Club House	Tony Johnson
		See Fieldtrip Report	Damon Point	Field Trip	Nate White
17	Sunday				
18	Monday	10:00AM-2:00PM	Members Open Access	Club House	Tasha Parker
19	Tuesday	4:00PM-8:00PM	Members Open Access	Club House	Wes Ames
20	Wednesday	10:00AM-2:00PM	Members Open Access	Club House	Dennis Batchelor
		4:00PM-8:00PM	Opal Cutting	Club House	Tony Johnson
21	Thursday	4:00PM-8:00PM	Members Open Access	Club House	Tony Johnson
22	Friday	7:30PM	Club Program Night	Fruitland Grange	Tony Johnson
23	Saturday	10:00AM-2:00PM	Viking Knitting/Spoil Weaving	Club House	Tony Johnson
24	Sunday				
25	Monday	10:00AM-2:00PM	Members Open Access	Club House	Tasha Parker
26	Tuesday	4:00PM-8:00PM	Members Open Access	Club House	Wes Ames
27	Wednesday	10:00AM-2:00PM	Members Open Access	Club House	Dennis Batchelor
		4:00PM-8:00PM	Members Open Access	Club House	Jillian Higgins
28	Thursday	4:00PM-8:00PM	Members Open Access	Club House	Tony Johnson
29	Friday				
23	Saturday	10:00AM-2:00PM	Opal Cutting	Club House	Tony Johnson
24	Sunday				

**For questions about a specific class or event, contact the instructor**

Dennis Batchelor (360) 870-8741	Wes Ames (253) 376-7871	Tony Johnson (253) 863-9238
Tasha Parker (206) 291-8069	Nate White (206) 349-7054	Jillian Higgins (253) 355-3146

\*\*\* **Membership Workshop** is the time when members can use the saws and cabbng machines

**This schedule is subject to change. Please check the club website for updated information.**

# MEET THE MEMBERS

Name: **Mary New**

Favorite Quote: Give yourself a little grace.

What are your skills/past experience with the rock Club or rock hounding?

I have been in love with rocks since I was a little girl (a million years ago)! The most vivid memory of my childhood is sitting on the beach (Agate Beach) for hours sifting through the rocks to find treasures. My daughter Rachel and I joined the club a couple of years ago. I love learning about the different rocks, gems, and minerals, and the endless possibilities of what to do with them!

What is your favorite rock, mineral or gem? Agates, fossils, and opals

What is your favorite thing to do with rocks, minerals or gems?

Learning lapidary skills has been so much fun. I am glad I am getting close to retirement so then I can spend more time at the clubhouse mastering my skills!

What are your three favorite books/podcasts?

- "All the Light We Cannot See"
- "The Stand" by Steven King
- "Grace Eventually" by Ann Lamott

What is your favorite memory surrounding rockhounding/rocks in general?

My most recent favorite memory was a few months ago when my whole family (Rachel, Kyle, and Rider) and my son Wade and Ellie all went on a FAMILY ROCKHOUDING DAY TRIP to Saddle Mountain (petrified wood) and George (common opals). On the way home we stopped at the Ginkgo Petrified Forest State Park to check it out. It was an amazing day!

In your opinion, what is the best thing about the Puyallup Valley Gem & Mineral Club?

The people! YOU are my people! It is so wonderful to find your tribe...other people that love rocks as much as I do. I feel like I have made new friends I will keep for a lifetime! I love how the club members are so kind and helpful, willing to share their experiences and knowledge with others, especially the newcomers!

In your opinion, where/how does the club need to improve?

It's hard to mess with perfection...actually, it's perfectly imperfect and I wouldn't want to change a thing!

What are three (3) things people might not know about you?

- I am a psychiatric nurse investigator for all of the psychiatric hospitals in Washington.
- I plan to write a book in a few years when I retire!
- I used to design (inside and out) custom homes before I became a nurse.

What is your greatest accomplishment?

My kids, by far! And the joy of sharing rock hounding adventures with my daughter Rachel is priceless!

# Associations Director Report

Hello to all my fellow rockhounds and pebblepups.

As I write this, I'm thinking about all the places we use to be able to collect material but no longer have access to it. Some of it is due to the government being too protective of natural resources and mismanaging it. Unfortunately, most times it is because of people in their desire to collect material do so in a manner that is destructive. Roadways should not be dug in or under. Live trees should not be dug under. When we dig a hole backfill it. Don't go collecting on private property, valid claims without permission or protected areas. And please don't leave trash or better yet if you see some pick, it up and dispose of it properly. If everyone did all this, we should be able to keep the areas open that we still have and possibly open up some new ones.

I will be attending the March Washington State Mineral Council meeting on March 19th at the Maplewood Clubhouse in Edmonds. As for any legislation both federal and state it has been quiet on both fronts.

Respectfully submitted by Mark Baumann, Associations Director

## Clubhouse report

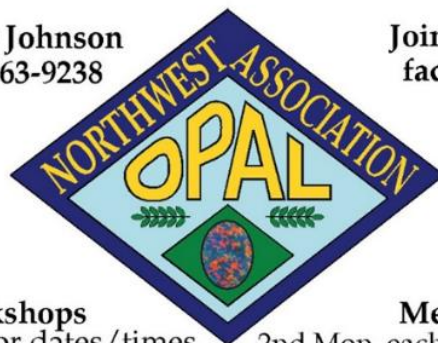
**Tony Johnson**

We now have a new online scheduling procedure for making your reservations at the clubhouse. It has been up and running for a month and so far, all the feedback has been really good. The process is simple and there is very detailed instruction, including a step-by-step visual procedure. If you have any questions or would like to receive the procedure email again, just reach out to Jillian at [PVGAMC@gmail.com](mailto:PVGAMC@gmail.com) and she will get it right to you.

As a note, remember to text or email your instructor AND/OR Jillian if you are not able to make it to your class so you do not wind up with no shows. Our new policy regarding no shows is detailed at the beginning of the instructions if you have any questions about them.

**Tony Johnson**  
253-863-9238

Join us on  
facebook



**Workshops**  
call for dates/times

**Meetings**  
2nd Mon. each month

## Field Trip Recap

**Nate White**

There was no field trip for the month of February, so there is no field trip recap. Look for next months to see what the club has been up-to on the field trip.

## How to Make Gem Boxes, pt. 2...Getting Started

By Brett Lawrence

Following the first article in this series we will now start getting into the nuts and bolts of my boxes. In starting this installment, it turned out to be longer than intended, so I will divide it into two parts and cover the equipment, tools, and supplies used to create my boxes.

I intend to present these articles to be mostly pointers and steps I developed along the way rather than a set of instructions or "how to's." Should you desire to get into this satisfying lapidary experience I would encourage you to come up with your own process, add your own ideas, and create an object that satisfies and looks good to you...then improve.

For this article, I will describe my equipment then answer the most common question I receive about my gem boxes.



Most of my boxes start life as a chunk of rough material, agate, sodalite, jasper, lapis. I run a 12-inch Lortone slab saw, a 6-inch Lortone trim saw, a Genie, and a flat lap. I will now delve much into these tools other than to offer a comment or two. For the slab saw I cut both what I call 3-crank and 5-crank slabs. These translate into 1 / 8 " and 1 / 4 " slabs respectively. The former size I find to be the optimal thickness for the box body while the latter is used to form the knob for the lid, along with having material for a cabochon or two. I have considered making a cab for each box but as of this writing I have not done so to any great extent.

The trim saw is used to cut out the stenciled pieces while the flat lap serves to make even the top of the box body and sometimes the bottom. Regardless of how careful you are in shaping the side pieces when joined there will be some unevenness. This is where the lap comes in. Care has to be taken when working with softer material as it is easy grind too much material and create a lopsided body rather than one that is symmetrical.

As for the Genies not much needs to be discussed here. Now for the big question. "What kind of epoxy do you use to make these?" This will start my list of supplies.

I use a clear 2-part 5-minute epoxy. Unfortunately, I have found that not all 5-minute epoxies are not equal. Initially, I tried using a 2-part instant epoxy but found it fell apart on the Genies with its water coolant. With experimentation, I determined the 5-minute epoxy to be optimal with the 30-minute is simply too long when monitoring for movement with pieces are joined. My preferred epoxy is Devcon with the Ace Hardware brand, if it can be found, to be right up there in quality. Gorilla Glue is satisfactory, taking a little longer to set. Despite its reputation, JB Weld, for me, is crap. I found it to take too long to set and had prolonged tackiness My suggestion is to do your own testing.

As a final idea for epoxies these will come typically in a 2-tube syringe arrangement and run about \$7 to \$8 per. They are adequate but when gluing pieces together sometimes only small amounts of each tube are needed. With the plunger setup it can be difficult to dispense small equal amounts of each component. One side of the plunger might hang up or it can abruptly dispense too much. Cold can thicken the components again making them hard to come out. As for me, I opted to invest in the bigger two-bottle Devcon 5-minute epoxy box. It is more expensive but will last like into eternity, is easier to control the amounts I want and, hence, eliminating the much of the wastage I had with the syringe arrangement.

For the next article, I will delve into the other supplies and tools in my collection. Again these are ones that I have found useful for me. Until then...



## Highest Waterfall in the World

Angel Falls has a total height of 3212 feet!



**Angel Falls:** A view of Angel Falls showing the world's longest uninterrupted drop of water. It starts as multiple streams of water at the top of the sandstone cliff of the Auyán-Tepuí, and descends as a thick cloud of mist at the base of the drop. The water then cascades down a steep slope to smaller waterfalls below. Photo copyright iStockphoto / jimmyvillalta. [Click to enlarge.](#)

Angel Falls in [Venezuela](#) is the world's tallest waterfall, with a total height of 3212 feet (979 meters). This total height includes a single uninterrupted drop of 2648 feet (807 meters), plus 564 feet (172 meters) of steep cascades and smaller drops downstream from the main falls. [1]

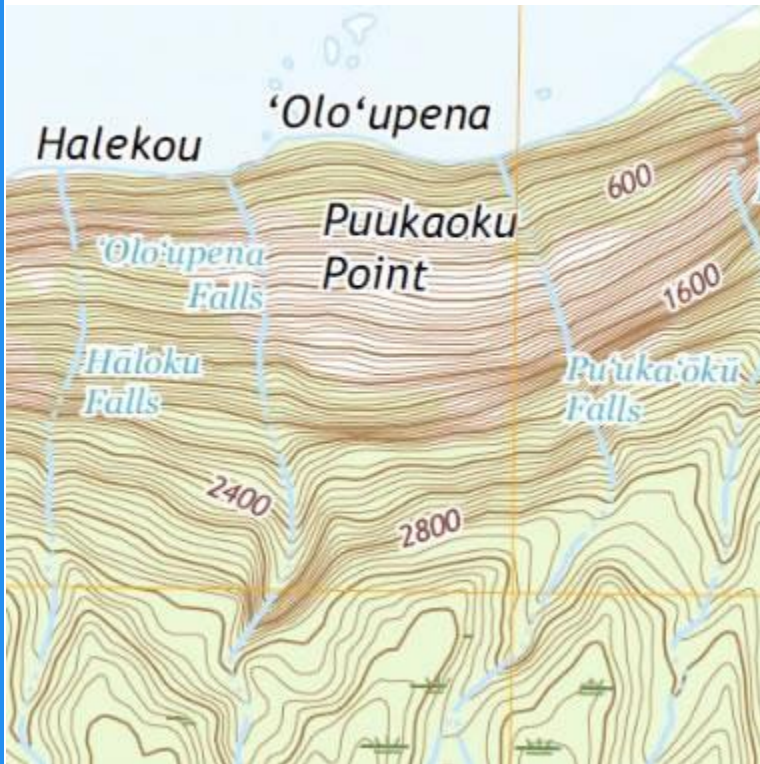
The waterfall was measured in 1949 by surveyor Perry Lowrey, during an expedition funded by National Geographic and led by Ruth Robertson. [1]

The single uninterrupted drop of 2648 feet is also the world's highest. Angel Falls holds two world records: 1) the waterfall with the greatest total height, and, 2) the waterfall with the greatest uninterrupted drop.

**Angel Falls location map:** Location of Angel Falls in eastern Venezuela. CIA Factbook Map.

Angel Falls is located in the Canaima National Park, which lies within the Bolivar State of southeastern Venezuela. The park is treasured so much that it has been named a UNESCO World Heritage site. [2]

The falls are on the Rio Kerepacupai Meru. The Rio Kerepacupai Meru is a tributary of the Rio Churún, which is a tributary of the Rio Carrao, which is a tributary of the Rio Orinoco. The Rio Orinoco is the world's fourth-largest river, and it flows into the Atlantic Ocean.



**Tallest Waterfalls in the United States:** The tallest waterfalls in the United States are located in Hawaii. This United States Geological Survey topographic map shows Olo'upena Falls (2953 feet) and Pu'u'uka'oku Falls (2756 feet) - the tallest and second-tallest waterfalls in the United States. Learn more about the [tallest waterfalls in the United States](#).

Angel Falls was named for James Angel, an American pilot, who in 1933 was the first aviator to fly over the falls. [3] Within a few years, Angel's story of a "mile-high waterfall" had been widely publicized through stories and trivia items in popular media. [4] This occurred before the height of the falls was properly measured and before the name Angel Falls was in popular use.

The first official use of Angel's name associated with the falls was on a map published in 1939 by the government of Venezuela as part of their report

titled *Exploración de la Gran Sabana* ("Exploration of the Great Savannah"). [3]

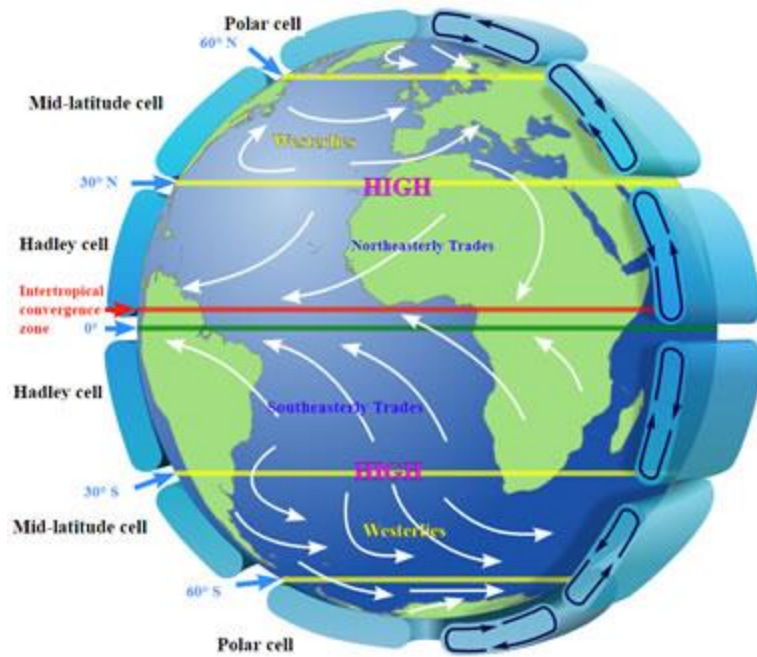
Angel served as a pilot and guide to the leaders of the project between 1933 and 1939. He enjoyed showing them "My Waterfall".

On a map within the project report, the name "Salto Ángel" was printed at the location of the falls. [3] That name is still used for the falls in Spanish-speaking countries.

Ruth Robertson's expedition to the falls, and Perry Lowrey's survey of their height, did not occur until 1949.



In 2009, Hugo Chávez, President of Venezuela, declared that Kerepakupai-merú should be the country's official name for the falls. It is an indigenous name from the Pemón natives meaning "falls from the deepest place".



**The Northeastly Trades:** The atmospheric circulation model above shows how the Northeastly Trade Winds deliver air masses from the arid regions of western Africa to northeastern South America. On their way, evaporation from the surface of the Atlantic Ocean fills these air masses with water, which will fall as rain when they are cooled rising the eastern slope of the Auyán-Tepuí. Image by NASA.

**The Upper Falls:** This photo is a view of the seldom-seen and generally ignored waterfalls and

channelized cascades upstream from Angel Falls. The next time the height of Angel Falls is surveyed, perhaps they should be considered as a potential addition to the total height?

In this photo, you can also see that most of the falls' water is emerging from cavities that follow bedding planes in the massive sandstone. A minor amount of water emerges from fracture cavities.

The volume of channelized flow and how the water begins its fall will certainly vary depending upon recent weather and time of year. Photo copyright iStockphoto / khyim. [Click for a larger view.](#)

Much of the water of Angel Falls begins its journey in the Atlantic Ocean. There, the northeasterly trade winds deliver dry air masses from the [Sahara Desert](#) of [Africa](#). These winds evaporate water from the ocean surface and carry it towards [South America](#).

As the moisture-laden air masses reach southeastern [Venezuela](#), they rise to cross the highlands of the Auyán-Tepuí - the headwaters of Angel Falls. The air masses cool as they rise, causing water vapor to condense and fall as rain.



Some of the rain soaks into the ground and enters a network of subsurface fractures and caverns beneath the Auyán-Tepuí. Other water runs off and flows into tributaries of the Rio Kerepacupai Meru, the river that feeds the falls. The river meanders across the top of the Auyán-Tepuí, heading towards a cliff on its northern edge.

The excitement begins about 500 feet from the cliff...

...suddenly, the river drops into a fracture system, changes flow direction by 135 degrees, and accelerates through a channelized cascade of white water. Just before reaching the falls, the water drops into fractures and caverns, then bursts into the air through openings below the top of the [sandstone](#) cliff. There it begins a dramatic free-fall of 2648 feet.

Much of the water vaporizes during the fall, and swirls as a mist in the turbulent air. The rest of the water plunges a half mile to the rocks below. The vaporized water descends in a rain onto the rocks below.

Upon landing, the water begins flowing over, under, and around rock debris that has fallen from the cliffs above. It then cascades down a steep slope, over smaller falls, on its way to the Rio Churún.

Angel falls has been in its current location for thousands of years. It will remain there until gravity pulls another block of the highly fractured sandstone away from the mountain. The block will fall to the ground and explode into a catastrophic rain of rock. The river will flow without interruption, but the position of the waterfall will change.

#### References

- [1] [Jungle Journey to the World's Highest Waterfall](#) (in archive - subscription required): by Ruth Robertson; The National Geographic Magazine, November 1949, pages 655 to 690.
- [2] [Canaima National Park](#): an article in the World Heritage List on the UNESCO website. Last accessed October 2022.
- [3] [Why the World's Tallest Waterfall Is Named Angel Falls](#): by Karen Angel; Terrae Incognitae, Volume 44, Number 1, April 2012, pages 16 to 42.
- [4] [Plane Pilot Sights Highest Waterfall in World](#): Popular Science: Volume 37, April 1938.
- [5] [State Department Travel Advisory for Venezuela](#): A Travel Facts page on the United States Central Intelligence Agency website, CIA Factbook, last accessed October 2022.

There is no cheap, quick, and safe way for a person from the [United States](#) to visit Angel Falls today. Historically tourists started by flying to Caracas, Venezuela. There, they would join a prearranged 5-day trip that would take them to Canaima National Park, make a short visit to Angel Falls, and start their return trip to Caracas.

The CIA Factbook is a trusted source of information for United States citizens who plan international travel. Their website contains this warning: "**The US Department of State currently warns US citizens to NOT TRAVEL to Venezuela due to crime, civil unrest, poor health infrastructure, kidnapping, and arbitrary arrest and detention of US citizens.**" Read the full details of their warning at the link in the reference box. [5]

## COMMUNITY SUPPORTERS

	<p style="text-align: center;"><b>South Hill RV Sales</b></p> <p style="text-align: center;">Offering the highest rated starter, midline, and high end towables and RV's at the lowest prices which has made us a top volume dealer in Washington state.</p> <p style="text-align: center;">12414 Meridian East, Puyallup 98373 253-435-7751 or 866-435-7751 <a href="http://www.southhillrv.com">www.southhillrv.com</a></p>
	<p style="text-align: center;"><b>Rice Museum of Rocks &amp; Minerals</b></p> <p style="text-align: center;">To engage, inspire, and educate generations on the splendor and complexity of our Earth.</p> <p style="text-align: center;">26385 NW Groveland Dr., Hillsboro, OR 97124 503-647-2418 <a href="mailto:Info@ricenorthwestmuseum.org">Info@ricenorthwestmuseum.org</a> <a href="http://www.ricenorthwestmuseum.org">www.ricenorthwestmuseum.org</a></p>
<p style="text-align: center;"><b>H &amp; I Lapidary</b></p>	<p style="text-align: center;">Amber, Jewelry, Beads, Findings, Gemstones, Slabs, Rough Material, Fossils, and Aussie items.</p> <p style="text-align: center;">Mike and LaVon Siperek (253) 531-7294 4203 E 99<sup>th</sup> Street, Tacoma, WA 98446 <a href="mailto:Yankees_Diesel@comcast.net">Yankees_Diesel@comcast.net</a></p>
<p style="text-align: center;"><b>Jerry's Rock &amp; Gem</b></p>	<p style="text-align: center;">Rocks, Minerals, Fossils, Equipment, Beading Supplies, Gemstones, Jewelry and Jewelry Repair</p> <p style="text-align: center;">(253) 852-0539 804 West Valley Hwy, Kent, WA 98032 <a href="http://jerrysrockandgem.com/">http://jerrysrockandgem.com/</a></p>

## SUNSHINE REPORT

With everything going on, we have started meeting again, but our attendance at the meetings is still low as members are staying safe. As a group we need to bring to each other's attention members who need healing thoughts or prayer sent their way.

If you know of anyone else who needs to be recognized in next months Sunshine Report , please email or call

Tony Johnson at [ynotopals@outlook.com](mailto:ynotopals@outlook.com) (253) 863-9238

# MINERAL OF THE MONTH



Have you ever heard of Atacamite? Me neither... this relatively rare mineral is a stunning bright green to dark emerald green to blackish green color. What makes this mineral a little difficult is that it is not a primary mineral, it is a secondary. What does this mean?!?! It means that it Atacamite forms from primary copper or bronze minerals that have oxidized in arid climates.

It got its name from the Atacama Desert in Chile where it was found in 1802. Because it has to oxidize in a specific way to produce Atacamite, it is not very easy to find, but can be found Arizona, China, Russia, Chile, Australia, and the Czech Republic.

Fun fact, the statue of Liberty, which is made of copper plating has produced very small amounts of Atacamite as it has oxidized and so have ancient Bronze and Copper artifacts.



## You Know You are Having an Interesting Rockhounding Experience When...

1. The weather forecast is okay, you dress for warm, dry weather and the only cloud to spawn moisture in the region happens to be parked right overhead. (How many points is that weather forecaster worth?)
2. In a reversal just as cruel, you dress warmly for a mostly cool showery time and out comes the sun, hoisting the temp and humidity, and baking you.
3. You think you have privacy on that lonely country road, start changing your clothing behind the car, see the parade coming, and turn into super-speed changer.

## FROM THE BENCH

What is a girdle and why is it necessary? Aside from being a part of woman's fashion for a couple hundred years (thank goodness that's over), a girdle is the widest part of a stone circumference. It separates the pavilion from the crown in faceted stones, and designates the boundary of the dome in a cabochon stone.

We need girdles on stones so that we have a surface to hold onto the stone with. It doesn't matter if you are wire wrapping, silversmithing, using prongs, or a weave, you need a surface for your metal or clay to hold on to. It also helps to set a clear boundary for the top of your stone. Have you ever tried to set a stone with a rounded edge? It is hard to make the setting uniform, which most humans find aesthetically pleasing. To cover a rounded edge, you would have to make your setting larger to hold your stone in place and this covers more of the stone's surface. It can be done, but save yourself the trouble and time by always having a girdle! What??? You know what I mean.

## Local Area Shows for 2024

DATE & TIME	CLUB	SHOW	LOCATION
February 2024 10th 9am—5pm 11th 9am—5pm	Whidbey Island Gem Club	Annual Gem Show	Oak Harbor Senior Center 51 SE Jerome St. Oak Harbor WA
February 2024 23rd 9am—5:50pm 24th 9am—5:50pm 25th 9am—5pm	Oregon Agate & Mineral Society	73rd Annual show	Oregon Museum of Science and Industry (OMSI) 1945 SE Water Ave. Portland, OR
March 2024 1st 10am - 5pm 2nd 10am - 5pm 3rd 10am - 5pm	Tualatin Valley Gem Club	65th Annual Rock and Mineral Show \$1 adults, 12 and under free	Forest Grove National Guard Amory 2950 Taylor Way Forest Grove OR
March 2024 2nd 10am - 6pm 3rd 10am - 5pm	East KingCo Club	Annual Rock and Gem Show	Pickering Barn 1730 10th Ave NW Issaquah, WA
March 2024 9th 9am - 6pm 10th 10am - 4pm	Northwest Montana Rock Chucks	Gold, Gem, and Mineral Show \$5 high school and up, 8th grade & under free	Flathead County Fairground Expo Building, 265 N Meridian Road Kalispell MT
March 2024 2nd 10am - 6pm 3rd 10am - 5pm	Owyhee Gem & Mineral Society	70th Annual Rock and Gem Show \$5 adults, 11 under free	O'Conner Field House 2207 Blaine St Caldwell, ID
March 2024 9th 9am - 5pm 10th 9am - 5pm	Panorama Gem and Mineral Club	Annual Show	Stevens County Fairground Ag and Trade Center 317 West Astor, Colville, WA
March 2024 16th 9am—5pm 17th 10am—4pm	Clallam County Gem And Mineral Association	Spring show	Vern Burton Community Center 308 East 4 <sup>th</sup> Street Port Angeles WA
March 2024 16th 9am - 6pm 17th 10am - 5pm	Hellgate Mineral Society	29th Annual Show \$3, under 12 free w/adult	Hilton Garden Inn 3720 North Reserve St. Missoula MT
March 2024 23rd 10am—5pm 24th 10am - 5pm	SE Idaho Gems & Mineral Society (SEIGMS)	Annual Rock and Gem Show \$3, 12 & under free/adult	Bannock County Fairgrounds 10588 Fairground Dr. Pocatello ID 83201
March 2024 23rd 10am - 6pm 24th 10am - 5pm	Mt. Baker Rock & Gem Club	62nd Annual Rock and Gem Show	Ferndale Pavilion 2007 Cherry Street Ferndale, Washington
April 2024 13th 10am - 5pm 14th 10am - 5pm	Maplewood Rock and Gem Club	Annual Spring Rock and Mineral Sale	Maplewood Clubhouse 8802 196th St SW Edmonds, WA
April 2024 13th 10am - 5pm 14th 10am - 5pm	North Seattle Lapidary & Mineral Club	Annual Rock and Gem Show	Crown Hill Center 9250 14th Ave NW Seattle, WA 98117
April 2024 19th 9am - 5pm 20th 9am - 5pm 21st 10am - 4pm	Willamette Agate & Mineral Society	67th Annual Rock and Gem show "River of Gems" \$5, 17 & under free/adult	Polk County Fairgrounds 520 S. Pacific Hwy Rickreall, OR
April 2024 20th 10am - 5pm 21st 10am - 4pm	Lakeside Gem & Mineral Club	27th Annual Rock & Mineral Show \$5 adults, 12 & under free	Benton Franklin County Fairgrounds Building 2, 1500 S. Oak Kennewick, WA
April 2024 26th 10am - 6pm 27th 10am - 6pm 28th 10am—4pm	Yakima Rock & Mineral Club	61st Parade of Gems Adults—\$6 Students—\$2.00 12 & under free	Central Washington State Fair Ground Modern Living Building 1301 South Fair Avenue Yakima ,WA 98901
April 2024 27th 10am - 5pm 28th 10am - 5pm	West Seattle Rock Club	56th Annual Rock Show	Alki Masonic Temple 4736 40th Ave. SW. Seattle, WA

## 2024 SHOW & TELL THEMES and PROGRAM NIGHT EVENTS

MEETING	DATE	SHOW & TELL THEME	PROGRAM NIGHT EVENT
January - 1st Meeting	January 12, 2024	Crystals or <b>any field trip finds</b>	
January - 2nd Meeting	January 26, 2024	Last Years Purchase or <b>any field trip finds</b>	Field Trips
February - 1st Meeting	February 9, 2024	Red & Pink or <b>any field trip finds</b>	
February - 2nd Meeting	February 23, 2024	Hearts Made of Stone or <b>any field trip finds</b>	Carl Carlson
March - 1st Meeting	March 8, 2024	Green or <b>any field trip finds</b>	
March - 2nd Meeting	March 22, 2024	Geodes <b>any field trip finds</b>	Jerry's Rock Shop
April - 1st Meeting	April 12, 2024	Obsidian or <b>any field trip finds</b>	
April - 2nd Meeting	April 26, 2024	<b>No Show &amp; Tell</b>	Auction/Potluck
May - 1st Meeting	May 10, 2024	Thundereggs or <b>any field trip finds</b>	
May - 2nd Meeting	May 24, 2024	<b>No Show &amp; Tell</b>	Fluorescent Minerals
June - 1st Meeting	June 14, 2024	Any Agates or <b>any field trip finds</b>	
June - 2nd Meeting	June 28, 2024	<b>No Show &amp; Tell</b>	Tailgate Party @ Grange Parking Lot
July - 1st Meeting	July 12, 2024	Metals or <b>any field trip finds</b>	
July - 2nd Meeting	July 26, 2024	<b>No Show &amp; Tell</b>	Jerry's Rock Shop
August - 1st Meeting	August 9, 2024	Jaspers or <b>any field trip finds</b>	
August - 2nd Meeting	August 24, 2024	<b>No Show &amp; Tell</b>	Picnic & Tailgate Party at club house on Saturday
September - 1st Meeting	September 13, 2024	Gemstones or <b>any field trip finds</b>	
September - 2nd Meeting	September 27, 2024	<b>No Show &amp; Tell</b>	Mini Demonstration Day
October - 1st Meeting	October 11, 2024	Opals or <b>any field trip finds</b>	
October - 2nd Meeting	October 25, 2024	<b>No Show &amp; Tell</b>	Auction/Potluck
November - 1st Meeting	November 8, 2024	Serpentine/Jade or <b>any field trip finds</b>	
November - 2nd Meeting	November 22, 2024	<b>No Show &amp; Tell</b>	BINGO Night
December - 1st Meeting	December 14, 2024	<b>No Show &amp; Tell</b>	Holiday Banquet/Officer Installation on Saturday
December - 2nd Meeting	No Meeting	<b>No Show &amp; Tell</b>	

## 2024 Elected Officers

Title	Name	Phone	Email
President:	Tony Johnson	(253)863-9238	ynotopals@outlook.net
Vice President:	Nathan White	(206)349-7054	nate.white77@gmail.com
Secretary:	Patti Dailey-Shives	(253)678-0029	pattidailey28@gmail.com
Treasurer:	Jillian Higgins	(253)355-3146	J.Y.Higgins@gmail.com
Association Director:	Mark Baumann	(253-310-5891	rocksnreptiles4me@gmail.com
1 Year Director:	Richard Yang	(208)596-8340	ryang0711@gmail.com
2 Year Director:	Tasha Parker	(206) 291-8069	surfange1830@gmail.com
1 Year Trustee:	Dennis Batchelor	(360)870-8741	hobbyhorse51@gmail.com
2 Year Trustee:	Glenn Rodrick	(253)531-4062	gtrodi@comcast.net

## 2024 Committee Chairs

Title	Name	Phone	Email
Clubhouse Coordinator	Tony Johnson	(253)863-9238	ynotopals@outlook.net
Club Show Coordinator	Jillian Higgins	(253)355-3146	J.Y.Higgins@gmail.com
Field Trips Coordinator	Nathan White	(206)349-7054	nate.white77@gmail.com
Web Master	Jillian Higgins	(253)355-3146	J.Y.Higgins@gmail.com
Editor/Communications	Jillian Higgins	(253)355-3146	J.Y.Higgins@gmail.com
Membership	Jillian Higgins	(253)355-3146	J.Y.Higgins@gmail.com
Sunshine	Tony Johnson	(253)863-9238	ynotopals@outlook.net
Newsletter	Jillian Higgins	(253)355-3146	J.Y.Higgins@gmail.com
Mineral Council	Mark Baumann	(253-310-5891	rocksnreptiles4me@gmail.com



**WASHINGTON STATE MINERAL COUNCIL**

The Puyallup Valley Gem & Mineral Club is a member of the American Lands Access Association and the Washington State Mineral Council. You can find more information about the ALAA at: [amlands.org](http://amlands.org) or the WA Mineral Council at:

# HAPPY BIRTHDAY

## March 2024

Andrea McVey – 2<sup>nd</sup>  
Lynn Pacione-Holman – 2<sup>nd</sup>

Dennis Small – 4<sup>th</sup>  
Shirley Rheault – 8<sup>th</sup>  
Patty Bradley – 11<sup>th</sup>  
Danielle White – 13<sup>th</sup>  
Peryl Linville – 14<sup>th</sup>  
Barbara Englander – 15<sup>th</sup>  
Mike Timmerman – 16<sup>th</sup>  
Brenden Mitchell – 17<sup>th</sup>  
Beverlee Nichols – 21<sup>st</sup>  
LaVon Siperek – 23<sup>rd</sup>  
Megan Hochstrasser – 25<sup>th</sup>

Olivia Miller – 25<sup>th</sup>  
William Hogleund – 27<sup>th</sup>  
Carol Peckewham – 27<sup>th</sup>  
Darby Kruger – 31<sup>st</sup>  
Glen M. Ripper – 31<sup>st</sup>  
Earlene Skinner – 31<sup>st</sup>  
Clara Snowden – 31<sup>st</sup>

### SOME MINERALS ARE JUST DENSE

W O L F R A M I T E T I M O R H C  
N K W E M A R C A S I T E G T E I  
I C U W T N I E T I N R O B T H N  
C E L G R Y M O T I T L N I E E N  
K R F S E C R A L I D I N E T N A  
E U E A E H R A E P Y E S Q I E B  
L S N V T R P T B C X B T E Y T A  
I S I E I Y I T T U P E X T R I R  
N I T T R S T O E P P T V I A R E  
E T E I E O E R T R O I O W B E V  
T E E L L P M E I I L C I S H T L  
I O G U L R E D R T Z N N U F I I  
N N O B I A J R Y E E I A L L S S  
A M W A M S R C P M D Z M R U S M  
L F U F E E T I T L A B O C S A E  
E E T I N E M L I N A R I T E C U  
M A G N E T I T E T I R E N B U H

- |                |               |                |
|----------------|---------------|----------------|
| 1. ANGLESITE   | 10. COBALTITE | 19. MAGNETITE  |
| 2. BARYITE     | 11. CUPRITE   | 20. MELANITE   |
| 3. BIXBYITE    | 12. EUXENITE  | 21. MILLERITE  |
| 4. BORNITE     | 13. FABULITE  | 22. NICKELINE  |
| 5. CASSITERITE | 14. GOLD      | 23. PYRITE     |
| 6. CERUSSITE   | 15. HUBNERITE | 24. SILVER     |
| 7. CHYSOPRASE  | 16. ILMENITE  | 25. WOLFRAMITE |
| 8. CHROMITE    | 17. LINARITE  | 26. WULFENITE  |
| 9. CINNABAR    | 18. MARCASITE | 27. ZINCITE    |





# ROCK-A-TEER

Newsletter of Puyallup Valley

Gem & Mineral Club

P.O. Box 134

Puyallup, WA 98371